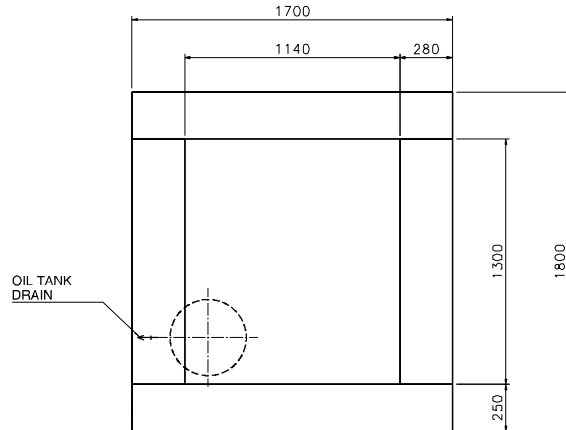
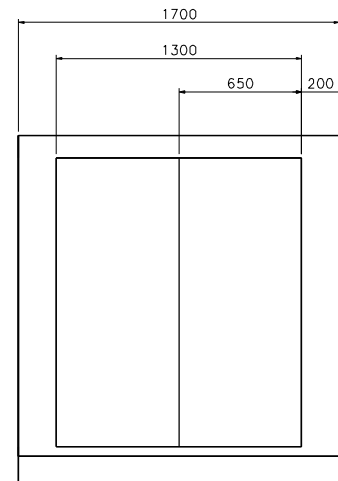


ELECTRICAL CONNECTION ACCESS VIA REMOVABLE PANEL THIS SIDE



NOTES:

CONNECTIONS	
A	COMPRESSED AIR OUTLET 2" MALE
B	ELECTRICAL ENTRY 58,5 mm
C	OIL TANK DRAIN 3/4" FEMALE WITH FLAG
D	AIR COOLING FLOW RATE 23 m ³ /min
E	CONDANSATE DRAIN POINT
F	WEIGHT 1750 KG

NOTE:
IT IS RECOMMENDED THAT A MINIMUM OF 90 cm CLEARANCE ON ALL SIDES AND ABOVE THE COMPRESSOR FOR MAINTENANCE PURPOSES

REV	DESCRIPTIONS	Y.S. DRAW	LK. CHK'D	P.O. APPR.	02 MAR 07 DATE
A	ADD TABULATION, TANK DRAIN, ELEC, NOTE				

<small>UNLESS OTHERWISE SPECIFIED DIMENSIONS ARE IN INCHES</small>		<small>CONTRACT NUMBER</small>	
<small>FRACCTIONS DECIMALS</small> ± .X ± ANGELS .XX ± ± .XXX ±		<small>DATE OF DRAWING</small> 11 JAN 2007	
<small>ENGINEER</small> B. OZKAN		<small>CHECKER</small> I. KARALAN	
<small>MANUFACTURING</small>		<small>WELDING</small>	
<small>APPROVED</small> R. OKÇON		<small>SIZE</small> A0	
<small>APPLICATION</small>		<small>DRAWING NO.</small> 00-0900-9000	
<small>SCALE 1:10</small>		<small>UNIT WT LB SHEET OF</small>	

VORTEX COMPRESSOR		ERS 90 COMPRESSOR DIMENSIONS	
<small>CODE IDENT NO.</small>		<small>DATE OF DRAWING</small> 11 JAN 2007	